



GENTLE. SUPPORTIVE. TRUSTED



**Tubular Bandages and
Garments for Healthcare
Professionals**

Vernacare



Contents

Why Choose Comfi	3
ComfiFAST Tubular Bandages	4
ComfiFAST MultiStretch Tubular Bandages	6
ComfiWEAR	8
ComfiKIDS	10
Wet & Dry Wrapping Guidance	12
ComfiGRIP	14
Comfi Single Use Tubular Bandages	15
Comfi Range - Technical Information	16
Case Studies	18



Vernacare has been working with the NHS for over 50 years and we've been the brand leader in tubular bandages since 2013. **Our Comfi range offers a selection of high-quality tubular bandages and garments,** developed by a team of woundcare experts.

We're here to support you - offering you the lowest costs, our products have been developed with benefits to support you and your patients. ComfiFast Tubular Bandages and Garments are made in the UK using high quality materials and SteamSoft Fabric, resulting in highly robust but soft and comfortable fabric that is ready to wear with no pins or tapes required...

The Result - quick and easy application for both the healthcare professional and the patient.



As the leading brand within the NHS and wider care sector, the Comfi Range supports individuals and healthcare workers in delivering excellent standards of care, offering an extensive range for all your needs.

<p>EST 2002</p> <p>Established brand for over 18 years</p>	 <p>Dedicated team of Woundcare experts</p>	 <p>Manufactured in the UK</p>
 <p>Using high quality materials</p>	 <p>SteamSoft Fabric for extra comfort</p>	 <p>MultiStretch Technology - extra freedom of movement</p>
 <p>Full range availability</p>	 <p>Cost effective offer - best price in market</p>	 <p>46% of UK prescribers choose Comfi</p>





ComfiFast™ Tubular Bandages

ComfiFast tubular bandages are commonly used for dressing retention, wet and dry wrapping of atopic eczema and skin covering for fragile skin.

When used for dressing retention, ComfiFast holds the primary wound dressing in place, providing an extra layer of protection during the healing process.

These colour coded bandages have been produced using SteamSoft Technology and light, breathable fabrics, for patient comfort whilst offering single stretch in the radial direction.

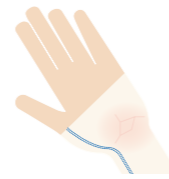
INDICATED FOR :



Dressing retention



Eczema, dry skin & psoriasis



Covering fragile skin

PRODUCT OVERVIEW:



Wash and reuse



Holds primary dressing



Light & breathable fabric



Variety of widths and lengths



No need for pins or tape



Extra layer of protection

MATERIAL:

Viscose, Elastane, Polyamide



EXTRA LAYER OF PROTECTION



STEAMSOFT TECHNOLOGY :

Our SteamSoft technology is used on all our products, leaving the fabrics softer and wearable straight from the box.



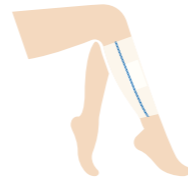
For more information and to order samples visit vernacare.com



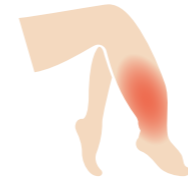
ComfiFast™ MultiStretch™ Tubular Bandages

ComfiFast MultiStretch tubular bandages are produced using the same light and breathable fabrics as ComfiFast with added MultiStretch technology.

INDICATED FOR :



Dressing retention



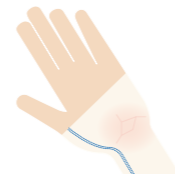
Primary & secondary lymphoedema



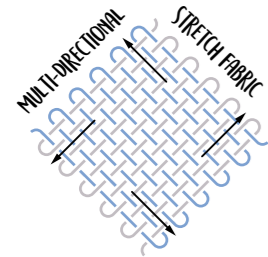
Eczema, dry skin & psoriasis



Under compression bandaging



Covering fragile skin



MULTI-STRETCH TECHNOLOGY

ComfiFast MultiStretch bandages stretch in the radial, longitudinal and diagonal directions for increased freedom of movement and improved patient comfort.



IDEAL FOR JOINTS



PRODUCT OVERVIEW:



Wash and reuse



Variety of widths and lengths



Holds primary dressing



No need for pins or tape



Light & breathable fabric



Extra layer of protection

MATERIAL:

Viscose, Elastane, Polyamide

For more information and to order samples visit vernacare.com



ComfiWEAR™ Ready to Wear Garments

ComfiWEAR ready to wear adult garments provide the ideal solution for covering the skin when using steroids, heavy emollients or ointments for the treatment of common conditions such as eczema, dermatitis and psoriasis.

ComfiWEAR Adult Garments have been developed to be used in conjunction with oils and emollients prescribed by Healthcare Professionals. By incorporating MultiStretch Technology, the garments are constructed to stretch in multiple directions, meaning they are easy to apply, offer additional comfort and are discreet to wear under clothing.

With superior SteamSoft Technology, our garments are not only ready to wear but also suitable for machine washing, allowing them to be re-used again and again whilst still retaining their softness.

ComfiWEAR adult garments are also an ideal solution for securing dressings in difficult areas of the body, such as the chest and groin.

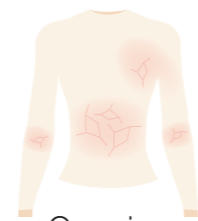
INDICATED FOR :



Dressing retention



Eczema, dry skin & psoriasis



Covering fragile skin



AN ACTIVE DRY

PRODUCT OVERVIEW:



Simple, safe and easy to use



Seams on the outside



Creates a barrier to scratching



Unobtrusive when worn under clothing



Prevents transfer of creams & emollients to clothing and bedding



Helps support patient concordance

Technical information, size availability and product codes, can be found on pages 16 & 17.

For more information and to order samples visit vernacare.com



ComfiKIDS™ Ready to Wear Garments

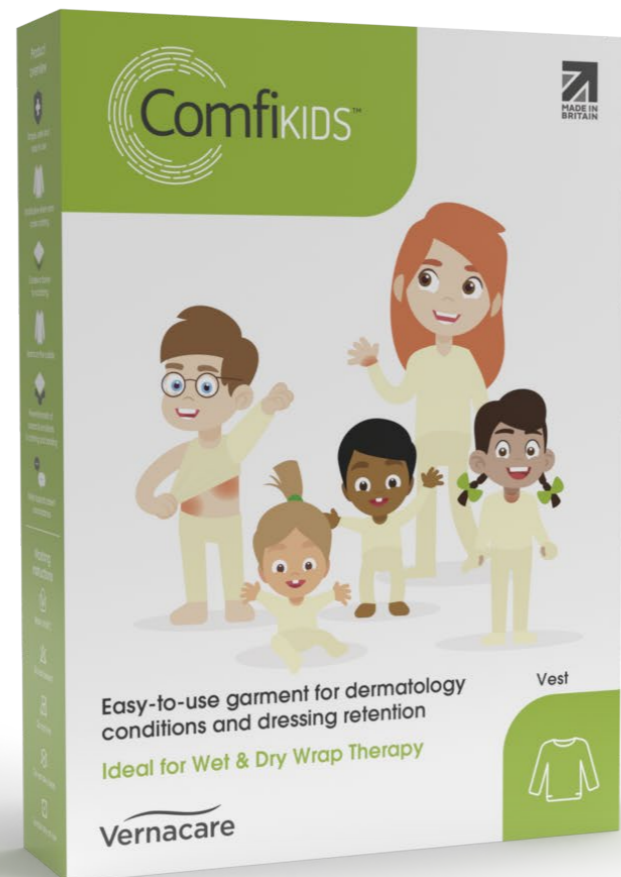
ComfiKIDS ready to wear garments provide the ideal solution for covering the skin when using steroids, heavy emollients or ointments for the treatment of common conditions such as eczema, dermatitis and psoriasis.

ComfiKIDS garments have been developed to be used in conjunction with oils and emollients prescribed by Healthcare Professionals. By incorporating MultiStretch Technology, the garments are constructed to stretch in multiple directions, meaning they are easy to apply by the professional or parent. The garments offer additional comfort and are discreet to wear under clothing.

With superior SteamSoft Technology, our garments are not only ready to wear but also suitable for machine washing, allowing them to be re-used again and again whilst still retaining their softness.

ComfiKIDS garments are also an ideal solution for securing dressings in difficult areas of the body, such as the chest and groin.

The garments are designed to fit each area of the body, ranging from a clava for the head through to socks for the feet, allowing the patient to live an active day and a restful night!



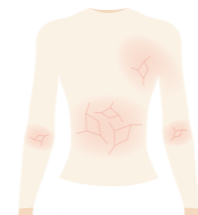
INDICATED FOR :



Dressing retention



Eczema, dry skin & psoriasis



Covering fragile skin

A COMFORTABLE NIGHT

PRODUCT OVERVIEW:



Simple, safe and easy to use



Seams on the outside



Creates a barrier to scratching



Unobtrusive when worn under clothing



Prevents transfer of creams & emollients to clothing and bedding



Helps support patient concordance

MATERIAL: Viscose, Elastane, Polyamide

Technical information, size availability and product codes, can be found on pages 16 & 17.

MEET THE COMFIKIDS

All of these children have skin conditions and wear our garments to help them lead healthy, happy lives.

JOSEF

“ I’m 10 years old, I play football twice a week and want to be a footballer when I’m older! ”



ERIN

“ Hi, I’m Erin. I’m preparing for my GCSEs, but when I’m not at school or revising, I like to hang out with my friends, we love to have sleepovers! ”



GRACIE

Gracie is nearly one and is always on the move, she has recently taken her first steps and is so proud of herself. Her parents are also proud of her, she now sleeps through the night, so a peaceful night for mummy and daddy, as well as Gracie!



RAJ

Raj is nearly 3 years old, he attends nursery and loves to join in playing games with his friends but he also loves cuddles before bedtime!



TIANA

“ My favourite thing to do is dancing. I’m 8 years old and I started dance lessons when I was 4. It’s really tiring but lots of fun! ”



WET AND DRY WRAP THERAPY GUIDANCE

Wet and dry wrap therapy is a technique developed to treat the symptoms of Atopic Eczema. Using this technique with ComfiWEAR or ComfiKIDS garments, will reduce itching, improve sleep and increase comfort – helping patients to carry on with a normal life, night and day.

WET WRAP THERAPY



Step 1 - Choose the garments to be used for each area of the body that needs to be wrapped. You will need two pieces of each garment – so if it's the legs, you will need two pairs of leggings or tights (dependent on age).



Step 2 - Place one garment into a bowl of warm water and leave to soak. Wet wraps have a cooling, anti-itch effect and helps add needed moisture to the skin.



Step 3 - Bathe with the appropriate bath oil or emollient recommended by your Healthcare Professional. After bathing, pat the skin dry and apply any steroids or emollients that have been prescribed or recommended.



Step 4 - Remove the garment from the water and squeeze out any excess water.

Step 5 - While still warm, put on the garment over the emollients. (Remember the label and seams should be on the outside).



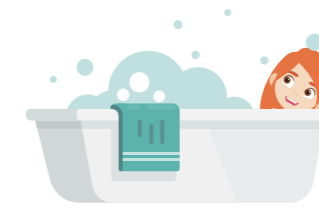
Step 6 - Put on the second, dry layer of the garment and then dress as normal.

The decision to wet wrap should only be done so under the guidance of a healthcare professional. Do not wet wrap if eczema appears wet or infected or if the child is unwell. If in doubt please contact your healthcare professional.

DRY WRAP THERAPY



Step 1 - Choose the garments to be used for each area of the body that needs to be wrapped. If it's the legs, you will need one pair of leggings or tights (dependent on age).



Step 2 - Bathe with the appropriate bath oil or emollient recommended by your Healthcare Professional. After bathing, pat the skin dry and apply any steroids or emollients that have been prescribed or recommended.



Step 3 - Put on a single dry layer of the garment over the emollients and dress as normal. (Remember the label and seams should be on the outside).

If you have a small patch of skin to wrap, the above steps can be repeated using ComfiFast or ComfiFast Multistretch Tubular Bandages. Simply cut the bandage to the appropriate size and follow the steps.

Your Healthcare Professional will recommend the most appropriate treatment and provide advice on bathing and emollient products.





ComfiGrip™ Elasticated Tubular Bandage

ComfiGrip tubular bandages are designed for light support of muscle strains, sprains and joint support. These types of injuries often result in pain, swelling, bruising and loss of movement. Providing light support to the affected area allows the individual to continue with life as normal while the injury heals.

PRODUCT OVERVIEW:

- Simple, safe and easy to use
- Variety of widths and lengths
- Light & breathable fabric
- Wash and reuse

MATERIAL: Cotton, Elastomeric

INDICATED FOR :



Sprains



Joint Support



Muscle Strain



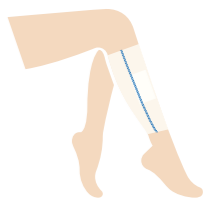
For more information and to order samples visit vernacare.com



ComfiNette™, ComfiTube™ and ComfiGauz™ Tubular Bandages

ComfiNette, ComfiTube and ComfiGauz are a range of single-use cost-effective tubular bandages for dressing retention. The range is available in a variety of widths and lengths to fit all areas of the body, ranging from fingers and toes to an adult torso.

INDICATED FOR :



Dressing retention

PRODUCT OVERVIEW:

- Simple, safe and easy to use
- Light & breathable fabric
- Variety of widths and lengths
- Cost effective

MATERIAL:

ComfiNette is made from **100% viscose**, ideal for frequent dressing changes.

ComfiTube is made from **100% unbleached cotton**, containing natural oils making the bandage water repellent.

ComfiGauz is made from **100% bleached cotton**, ideal for use where natural fibres are preferred.

Technical information, size availability and product codes, can be found on pages 16 & 17.



Technical Information



WIDTH (unstretched)	Application	Limb circumference	Ref 1m	Ref 3m	Ref 5m	Ref 10m
3.5cm Red Line	Small Limbs	8-15cm	F12 EGP063	-	-	F15 EGP005
5.0cm Green Line	Medium Limbs	10-25cm	F22	F23	F24	F25 EGP006
7.5cm Blue Line	Large Limbs	20-45cm	F32 EGP067	F33	F34 EGP069	F35 EGP007
10.75cm Yellow Line	Extra Large Limbs, Head, Trunk (Child)	35-65cm	F42 EGP070	F43 EGP071	F44 EGP072	F45 EGP008
17.5cm Beige Line	Trunk (Adult)	50-120cm	F52	-	-	F55 EGP009



WIDTH (unstretched)	Application	Limb circumference	Ref 1m	Ref 3m	Ref 5m	Ref 10m
3.5cm Red Line	Small Limbs	8-15cm	FMS12	-	-	FMS15 EGP036
5.0cm Green Line	Medium Limbs	10-25cm	FMS22	FMS23	FMS24 EGP172	FMS25 EGP037
7.5cm Blue Line	Large Limbs	20-45cm	FMS32	FMS33	FMS34	FMS35 EGP038
10.75cm Yellow Line	Extra Large Limbs, Head, Trunk (Child)	35-65cm	FMS42	FMS43	FMS44	FMS45 EGP039
17.5cm Beige Line	Trunk (Adult)	50-120cm	FMS52	-	-	FMS55



Product	Size : Limb Circumference	REF	NPC
Child Vest	6 - 24 months	CV24	EGC014
	2 - 5 years	CV5	EGC015
	5 - 8 year	CV8	EGC016
	8 - 11 years	CV11	EGC017
Child Tights	11 - 14 years	CV14	EGC018
	6 - 24 months	CT24	EGC022
Child Leggings	2 - 5 years	CL5	EGC023
	5 - 8 years	CL8	EGC024
	8 - 11 years	CL11	EGC025
	11 - 14 years	CL14	EGC026
Child Clava	6 months - 5 years	CC5	EGC012
	5 - 14 years	CC14	
Child Mittens	Up to 24 months (with thumb hole)	CM24	EGC019
	8 years (with thumb hole)	CM8	EGC020
	8-14 years (without thumb hole)	CM14	EGC021
Child Socks	up to 8 years	CS8	EGC027
	8-14 years	CS14	EGC028



Product	Size : Limb Circumference	REF	NPC
Adult Vest	Small Chest : 71 - 91cm (28" - 36")	CV20	
	Medium Chest : 91 - 117cm (36" - 46")	CV21	EGC037
	Large Chest : 117 - 152cm (46" - 60")	CV22	EGC038
Adult Leggings	Small Waist / Hips : 71 - 91cm (28" - 36")	CL20	
	Medium Waist / Hips : 91 - 117cm (36" - 46")	CL21	EGC034
	Large Waist / Hips : 117 - 152cm (46" - 60")	CL22	EGC035



Width Unstretched	Application	Limb Circumference	Ref 1m	Ref 10m
C 6.75 cm	Medium wrist / small ankle and arm	16-20cm	GCN2	GCN5 EGA024
D 7.50 cm	Large arm / medium ankle	20-24cm	GDN2	GDN5 EGA005
E 8.75 cm	Large ankle / medium knee	24-28cm	GEN2	GEN5 EGA006
F 10.00 cm	Large knee / medium thigh	28-36cm	GFN2	GFN5 EGA007
G 12.00 cm	Large thigh	36-46cm	GGN2	GGN5 EGA008



Size	Application	ComfiNette 20m	ComfiTube 20m	ComfiGauz 20m
00	Toes	N006 EGJ045	-	Z006 EGJ051
01	Fingers and toes	N016 EGJ041	T016 EGJ055	Z016 EGJ035
12	Bulky dressing for fingers and toes	N126 EGJ042	T126 EGJ056	Z126 EGJ036
34	Children's limbs / Adult hands	-	-	Z346 EGJ052
56	Adult limbs	N566 EGJ043	T566 EGJ058	Z566 EGJ037
78	Large adult limbs	N786 EGJ044	T786 EGJ039	Z786 EGJ038
T1	Small trunk / Adult head	NT16 EGJ047	TT16	ZT16 EGJ053
T2	Large trunk	-	TT26 EGJ060	-

Case Studies

CASE STUDY 1

ComfiKIDS™ Ready to Wear Garments



The Patient and the Problem

A 7-year-old girl presented with eczema on her limbs with erythematous, excoriated patches on the ante cubital fossae, forearms, popliteal fossae, lower legs, dorsum of the feet and torso. Localised lichenification with some oozing and crusting occurred on forearms and wrists. Swabs identified penicillinase-producing Staphylococcus.

Second Phase Treatment

Once the infection was under control, the strength of topical steroids was stepped down to Eumovate ointment. For the next 7 days Eumovate ointment and emollients were applied to the skin every 24 hours and covered with wet wrapping **ComfiKIDS Garments** which remained in place for 24 hours before the ointments were re-applied. This addressed the severe lichenified inflamed eczema on the limbs and the generalised dry skin. The patient and parents were taught to apply the **ComfiKIDS Garments** as wet wraps which enabled treatment at home.

After 7 days 1% hydrocortisone replaced Eumovate and the wet wrapping continued for a further 7 days. Frequency of application reduced to once every 48 hours with the **ComfiKIDS Garments** remaining in place between reapplication of steroid creams and emollient. To prevent further recurrence the patient was encouraged to continue the use of emollients under the (**ComfiKIDS**) wet wrap at night time and on weekends.



CASE STUDY 2

ComfiFast™ MultiStretch™ Tubular Bandages



The Patient and the Problem

A 31-year-old man presented with lichen simplex chronicus on his lower limbs. The condition had persisted for 12 months and had failed to respond to previous treatments prescribed by the GP. The rash caused severe itching and adversely affected the patient's quality of life.

Therapy Received

Effective emollient therapy is the cornerstone treatment for any dry skin condition to which other therapies can be added. Occlusion is also a successful therapy aid as it provides a barrier to prevent scratching and permits enhanced and prolonged application of topical medications.

The patient received complete emollient therapy consisting of greasy emollient (yellow soft paraffin) Balneum Plus bath additive and Balneum cream, mainly to relieve itching. Dermol 500 lotion was used as a soap substitute. Treatment included Synalar ointment under zinc paste and ichthamol bandages (Steripaste) under **ComfiFast MultiStretch** (blue line = 7.5cm flat width) tubular bandages. The **ComfiFast MultiStretch** prevented the paste from getting onto the patients clothing.



ComfiKIDS™ Ready to Wear Garments

Wet wrapping therapy using ComfiKIDS Garments can be a powerful tool in managing severe atopic eczema.

Geeta Ayer, M.A. MSc, RGN Dip Derm Nursing, Non medical prescriber, Dermatology Nurse Practitioner (Manchester, England)

The Patient and the Problem

A 7-year-old Asian girl presented with eczema on her limbs with erythematous, excoriated patches on the ante cubital fossae, forearms, popliteal fossae, lower legs, dorsum of the feet and torso. Localised lichenification with some oozing and crusting occurred on forearms and wrists. Swabs identified penicillinase-producing Staphylococcus.

KEY BENEFITS OF WET WRAPPING WITH COMFIKIDS GARMENTS:

- Creates a physical barrier - preventing further damage to fragile skin
- Helps soothe patient skin, delivers a cooling effect and reduces the eczema associated itching - improves patient quality of life
- Reduces the frequency for re-application of anti-inflammatory skin creams / emollients
- Keeps skin moisturised and hydrated

The Treatment Goal

The immediate treatment priority was to manage the infected eczema. The overall treatment goal was to reduce the severity of the itch scratch cycle by managing the general skin dryness.

Therapy Received

Acute Phase Treatment included oral flucloxacillin (10 days), a potent topical steroid cream (14 days) (Eocor, Mometasone Furoate) with Eoderm cream used on resulting skin. Chlorthal Plus was used for bathing and Alocor (Hydrocortisone Hydrochloride, 10mg) used at night for the severe pruritus.

ComfiFast™ MultiStretch™ Tubular Bandages

Treating chronic lichenification using ComfiFast MultiStretch tubular bandages

Geeta Ayer, M.A. MSc, RGN Dip Derm Nursing, Non medical prescriber, Dermatology Nurse Practitioner (Manchester, England)

The Patient and the Problem

A 31-year-old Caucasian man presented with lichen simplex chronicus on his lower limbs. The condition had persisted for 12 months and had failed to respond to previous treatments prescribed by the GP. The rash caused severe itching and adversely affected the patient's quality of life.

KEY BENEFITS OF DRY WRAPPING WITH COMFIFAST MULTISTRETCH TUBULAR BANDAGES:

- Prevents the transfer of emollients, creams and pastes to the patients clothes
- Easy to use and apply to the affected limb
- Improves support to the affected limb improving patient comfort
- Fits snugly over paste bandages
- Remains in place without the requirement for additional fixation (grip / tape / ties etc)
- Helps keep skin moisturised and hydrated

The Treatment Goal

The primary treatment goal was to reduce the itch-scratch cycle by managing the underlying dermatitis. Secondary aims were to treat the dry skin and reduce (or preferably, clear) the rash. Better management of the underlying dermatitis would reduce the itching experienced by the patient and thereby improve their quality of life.

Full case studies are available to download at: vernacare.com



vernacare.com

Vernacare Limited, 1 Western Ave, Matrix Park, Chorley, Lancashire, PR7 7NB. UK

Telephone: +44 (0)1772 299900 | Fax: +44 (0)1772 299901

Email: info@vernacare.com

Comfi, ComfiFast, MultiStretch & SteamSoft, ComfiWear, ComfiKids, ComfiNette, ComfiTube, ComfiGauz and ComfiGrip are trademarks of Verna Group © Vernacare Limited 2021

As our policy is one of continuous improvement, we reserve the right to modify designs without prior notice.

